



**NEW
PRODUCT**



BLACK
U91113BL

FLIGHT CASE ALPHATHETA RMX-IGNITE

U91113BL

UDG Ultimate Flightcases not only transport your complete set up easily & securely, but also facilitates devices to be setup within minutes. With these premium features incorporated, the UDG Ultimate Flightcases provides premium professional quality in a very stylish modern black colored combination.

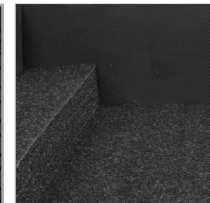
FEATURES

- Fits: AlphaTheta RMX-Ignite
- High density diamond embossed EVA foam & carpeted protective padding
- Dual anchor rivets with included washer
- Extra-wide solid aluminum profiles
- Convenient 65 mm space at rear for connections & PSU storage
- Heavy duty construction of 5mm thick plywood
- Laminated in a black finish with a honeycomb/hexagonal "Stage Grip" pattern
- High grade aluminium UDG logo plate
- UDG heavy-duty spring-loaded handles
- Secure stacking due to stackable ball corners
- Sturdy construction
- Recessed butterfly twist latch lock
- Rubber feet at the bottom for support in standing position

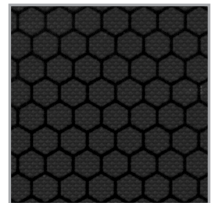
DIMENSION		WIDTH	HEIGHT	DEPTH	WEIGHT
OUTER	CM	38.5	31.6	15.8	3.05 kg
	INCH	15.2	12.4	6.2	
INNER	CM	34.3	21.0	9.0	6.70 lbs
	INCH	13.5	8.3	6.2	



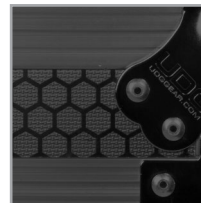
High grade aluminium
UDG logo plate



High density diamond
embossed EVA foam &
carpeted protective padding



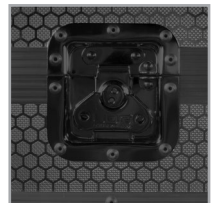
Laminated in a black finish
with a honeycomb/hexagonal
"Stage Grip" pattern



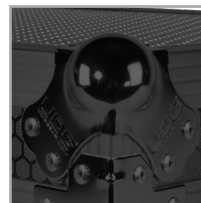
Improved powder coated
and anodized hardware



Extra-wide solid aluminum
profiles



Recessed butterfly twist
latch lock



Secure stacking due to
stackable ball corners



UDG heavy-duty
spring-loaded handles



Rubber feet at the bottom
for support in standing
position