



NEW
PRODUCT



ALUMINUM FLIGHT CASE ALPHATHETA RMX-IGNITE

U93033BL

We, at UDG have further fine-tuned already a great design concept of our flight case into one specially for the most discerning creative performers. Constructed from aluminum thus providing an extremely stable structure with lighter weight compared to traditional flight cases. The inner sides are protected with high density EVA foam protective padding.

The UDG Ultimate Aluminum Flight Case AlphaTheta RMX-Ignite is designed to keep your AlphaTheta RMX-Ignite protected from accidental damage when you transport it to and from gigs. They're compact and lightweight yet tough enough to keep your gear safe.

FEATURES

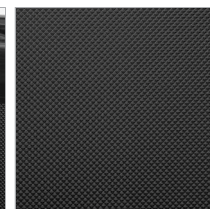
- Fits: AlphaTheta RMX-Ignite
- Lighter weight than traditional flight cases
- Black Diamond finishing surface
- Corrosion resistant aluminum profiles with strong rounded corners
- Fully-lined with high density foam protective padding
- Fully lined interior egg-crate foam on lid
- Ergonomic & sturdy carry handle
- Four strong butterfly lock
- Rubber feet at the bottom for support in standing position
- Several additional rivets for improved solidity

DIMENSION		WIDTH	HEIGHT	DEPTH	WEIGHT
OUTER	CM	41.1	31.7	18.5	3.67 kg
	INCH	16.2	12.5	7.3	
INNER	CM	34.6	22.2	7.3	8.09 lbs
	INCH	13.6	8.7	2.9	

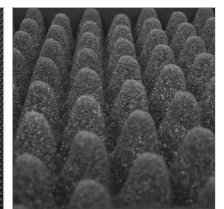
BLACK
U93033BL



Corrosion resistant aluminum profiles with strong rounded corners



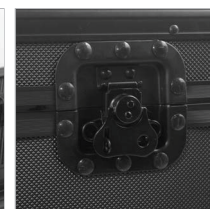
Black Diamond finishing surface



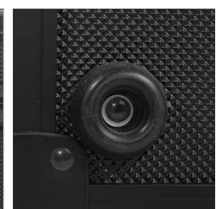
Fully lined interior egg-crate foam on lid



Ergonomic & sturdy carry handle



Four strong butterfly lock



Rubber feet at the bottom for support in standing position